



Welcome meeting for Year 6.

# What is the structure of year 6 for 23/24?

- There will be three home classes of mixed 5/6 children (Willow, Rowan and Pine).
- Children will register in their home classes before moving into core classes.
- Transition time will be speedy and efficient to avoid lost learning time.
- Children will transition back to their home classes in preparation for lunch.

# What will year 6 core look like?

- Year 6 children will be taught Maths, EGPS, Reading and Writing by Mr. Latkowski, Mr. Hill and Miss Marshall.
- Science will be taught in one afternoon per week by splitting year 5/6.
- This investment in three experienced staff in year 6 will ensure that children of all abilities can be pushed to reach their maximum potential.

# What will the year 6 curriculum look like?

- The year 6 will be taught the year 6 substantive, procedural and disciplinary knowledge from our year 6 curriculum ensuring full coverage of the curriculum.
- As mentioned previously, science will be taught discretely in core classes in an afternoon.
- During curriculum teaching in the afternoons, there will be different outcomes for both the year 5 and 6 children.
- The Autumn term driver will be history and both year 5/6 will focus on World War 1.

# How will they be prepared for SATs?

- The school has invested in year 6 specific revision books to ensure the homework is targeted towards to SATs.
- Year 6 boosters will begin in Autumn term and will be led by the year 6 team and supported by the SLT.
- Assessment weeks will be conducted as year 6 – this will give the children the opportunity to practise previous SATs papers throughout the year and help staff identify the gaps in learning to inform future planning.
- Year 6 specific communication (including SATs information) will be shared with parents and children at regular intervals throughout the year.
- Y6 SATS meeting in Autumn term.

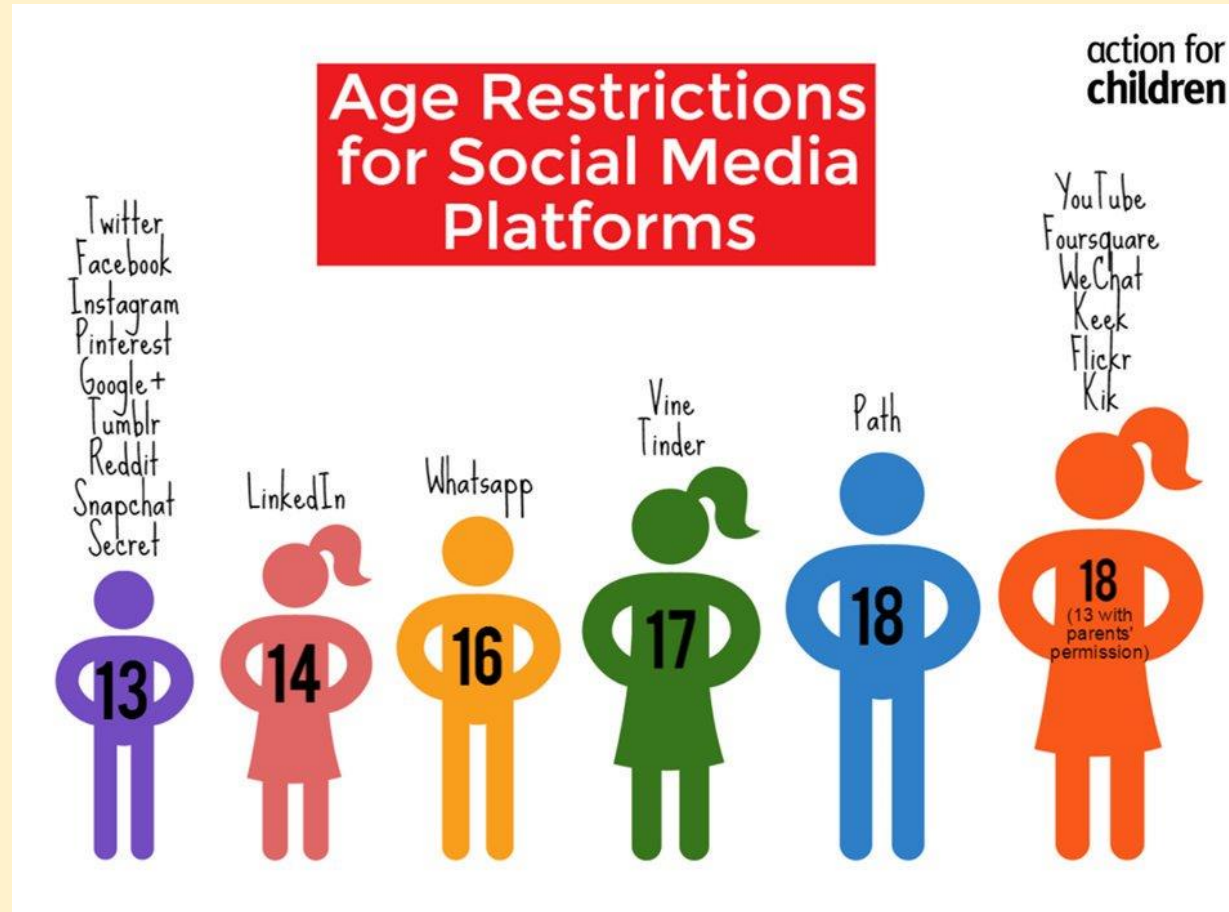
# How will we make year 6 a special year?

- There will be two head pupils chosen from year 6 who will lead specific activities throughout the year.
- There will be various pupil leadership roles that year 6 will be prioritised.
- Year 6 specific residential.
- Separate end of year performance at Sutton Centre Academy theatre.
- End of year graduation for year 6.
- Transition from year 6 to year 7.

# Reading



# Social Media



# How can you support us?

- Support with ensuring all home learning is completed.
- Complete home organisers and ensure children read everyday.
- Support with managing anxiety around SATs – SATs will be promoted as a celebration of the children's learning at Mapplewells.
- Helping to ensure children maintain positive relationships throughout year 6, including managing social media.